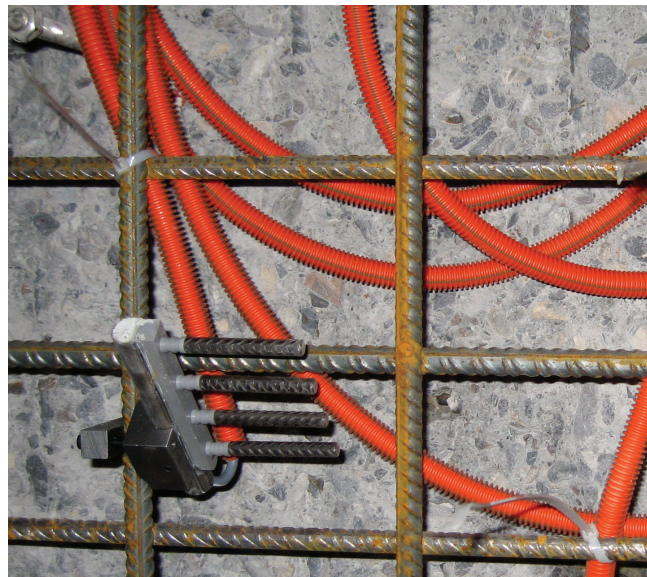
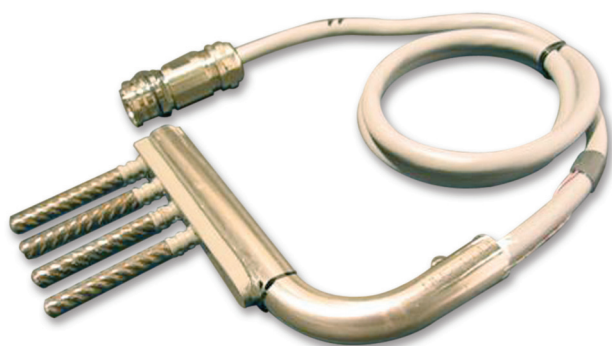


# CORROSION CURRENT SENSOR

*SensCore 16.1010*



## TECHNICAL DATA

### CORROSION CURRENT SENSOR

Material	Ordinary Rebar
----------	----------------

### SIZE

Length	60 mm
Rod Ø	8 mm

### CORROSION CURRENT

2 positions up to 80 mm depth	Installation of the 1st Sensor in a variable depth
-------------------------------	--

## MAIN FEATURES

- Corrosion Initiation Measurement
- Corrosion Propagation Measurement
- Appropriate to variable Concrete Covers
- Optimized for SensCore Datalogger 16.2010

Roctest Ltd. • 665 Pine Avenue, Saint-Lambert, QC J4P 4P4 CANADA • Phone 1-450-465-1113 • Fax 1-450-465-1938 • info@roctest.com • www.roctest.com  
Telemac S.A. • 10, avenue Eiffel, 77220 Gretz-Armainvilliers, France • Phone +33-1-64-06-40-80 • Fax +33-1-64-06-40-26 • info@telemac.fr • www.telemac.fr  
Smartec SA • Via Pobietto 11, CH-6928 Manno, SWITZERLAND • Phone +41 91 610 1800 • Fax +41 91 610 1801 • smartec@smartec.ch • www.smartec.ch

Products and specifications are subject to change without notice. © Roctest Limited, 2008. E161010-280508